

INTRODUCTION TO AERONAUTICAL CHARTS



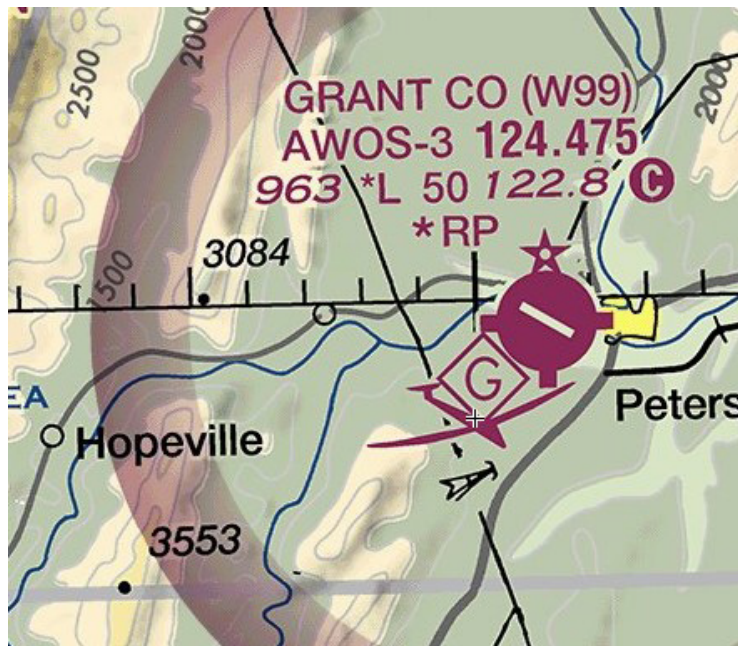
VALUABLE VFR CHART DATA

OBJECTIVE

Identify and understand the amount of information pilots can obtain from a VFR sectional chart.

PROCEDURE

1. Divide the class into pairs.
2. Have the students identify the following information using just the included excerpt of a sectional chart. (They may reference the legend and/or Aeronautical Chart User's Guide to interpret the symbols, but not the airport's entry in the Chart Supplement.)



Editorial credit: FAA Sectional Chart

QUESTIONS

1. Airport name: *Grant County*
2. Airport identifier code: *W99*
3. Are services available? How do you know?

Yes, there are "tick marks" on the circle.

4. To the west of the airport, there is a black line running northwest-southeast. What does it represent?

Power lines



5. Where is the airport in relation to the town?

The airport is to the west of town, along the highway.

6. Describe the terrain around the airport. Does it sit on a hill or in a valley/bowl?

There is rapidly-rising terrain to the west, with a 3,084 foot ridge to the northwest and a 3,553 foot peak to the southwest, with a pass in between. Terrain raises to the northeast, as well. The airport sits in a valley surrounded by high terrain.

7. Weather reporting type and frequency: *AWOS-3 on 124.475 MHz*

8. Is full-time lighting available? How would you know?

Lighting is available, but the asterisk indicates lighting limitations; need to reference the Chart Supplement.

9. What does the aircraft symbol with a G in a diamond represent?

There is glider activity at the field.

List at least four other details about the airport you can learn from this sectional:

10. *Elevation of runway: 963 feet MSL*

11. *Runway length: "50" indicates 5,000 feet*

12. *Common traffic advisory frequency: CTAF, 122.8 MHz followed by the C in a circle*

13. *Non-standard right traffic for one of the runways; the asterisk means reference the Chart Supplement for details; the Chart Supplement says right traffic applies only to gliders and ultralights.*

Other details: There is a rotating beacon (the star symbol).